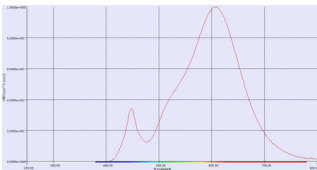




## LED ES111

**CREE XB-D LED, grey, 17W, 140°, 2700K, dimmable**

High Output LED HV Reflector Lamp as ideal replacement for HV halogen lamps with GU10 base. These LED lamps are especially well suited for general lighting applications. LED spots produce a warm luminous flux comparable to halogen lamps and are ideal for room lighting, or setting accents. LED lamps are compatible with most standard luminaires with GU10 sockets, and were specifically developed as an alternative to halogen lamps. LED lamps provide increased energy savings and much lower maintenance costs. This product has an energy class rating of A. Consumption rate is 18kWh/1000h.



## TECHNICAL DATA

Item no.:	551652
Socket	GU10
Lamp type	LED ES111
Nominal voltage	230V ~50Hz V
Height	7.1 cm
Diameter	11.1 cm
Net weight	0.187 kg
Gross weight	0.209 kg
IP Code	IP 20
Dimmable	Ja
Dimming technology	trailing edge
Energy efficiency index	A
Weighted energy consumption	18 kWh/1000h
Electrical power factor	0,97
Wattage	17.5 W
Lumen	750 lm
Lumen	70 lm
Colour temperature	3000 Kelvin
Beam angle	140 °
Color	chrome
CRI	>80
Binning	6



Service life	35000 h
Switching cycles	50000
Start-up time	1 s

**Notes**

---

---

---

---

---